



Banner Mountain Firewise Community



FIREWISE USA™
Residents reducing wildfire risks

Please Sign In.

Please Visit Our Neighborhood Contact Table.

If You Sign Up as a Neighborhood Contact You Have a Chance to Win a Prize.

You have a Question/Comment Card on your seat.

Meeting Begins at 5:00pm and Ends at 6:30pm



**Banner Mountain
Firewise Community**



PROGRAM AGENDA 5:00pm - 6:30pm

Welcome and Overview

Mo Graber, Banner Mountain Firewise Steering Committee - Moderator

Homeowners' Insurance After the LA Wildfires

Meet Our Panelists:

CA Department of Insurance (CDI).....**Lisa Strange**

CA Fair Access to Insurance Requirements (CA FAIR).....**Phillip Irwin**

East Main Street Insurance Agent..... **Ryan Dunsdon**

Neighbor Helping Neighbor - A Call for Neighborhood Contacts

Jeff Peach, Banner Mountain Firewise Community - Leader

Thank You and Closing

Mo Graber, Banner Mountain Firewise Steering Committee - Moderator



Maureen "Mo" Graber
Friends of Banner Mountain &
Banner Mountain Firewise Steering Committee

Housekeeping:

- Welcome!
- Restrooms and exits
- Questions/Comments Card
- All the material covered, including links to resources are posted to our Friends of Banner Mountain website at <https://www.bannermountain.org/>
- Please consider joining the Friends of Banner Mountain for \$25/year
- Please see George Olive for information on Neighborhood Contacts
- Please see Bob Hanna for information to schedule a Defensible Space Advisory Visit
- The importance of preparing a "Go Bag." Checklists available at:
 - <https://news.caloes.ca.gov/get-ready-for-wildfire-prep-a-go-bag-with-essential-items/>
 - <https://www.nevadacountyca.gov/2773/Go-Bags-Back-Up-Plan>
- A lot to cover in a short period of time - Let's get started!



Maureen "Mo" Graber
Friends of Banner Mountain &
Banner Mountain Firewise Steering Committee

January 2025 LA County Wildfires

- Began January 7, 2025 and contained January 31, 2025
- 150,000 people evacuated
- 37,000 acres burned
- More than 16,000 structures destroyed
- 29 deaths

2025 LA Wildfire by the Numbers (source: UCLA School of Management study)

- Estimated \$164 Billion in damages
- Estimated \$94 - \$164 Billion in property and capital losses
- Estimated \$75 Billion in insured losses
- 55.1% of utilities infrastructure were destroyed.



Maureen "Mo" Graber
Friends of Banner Mountain &
Banner Mountain Firewise Steering Committee

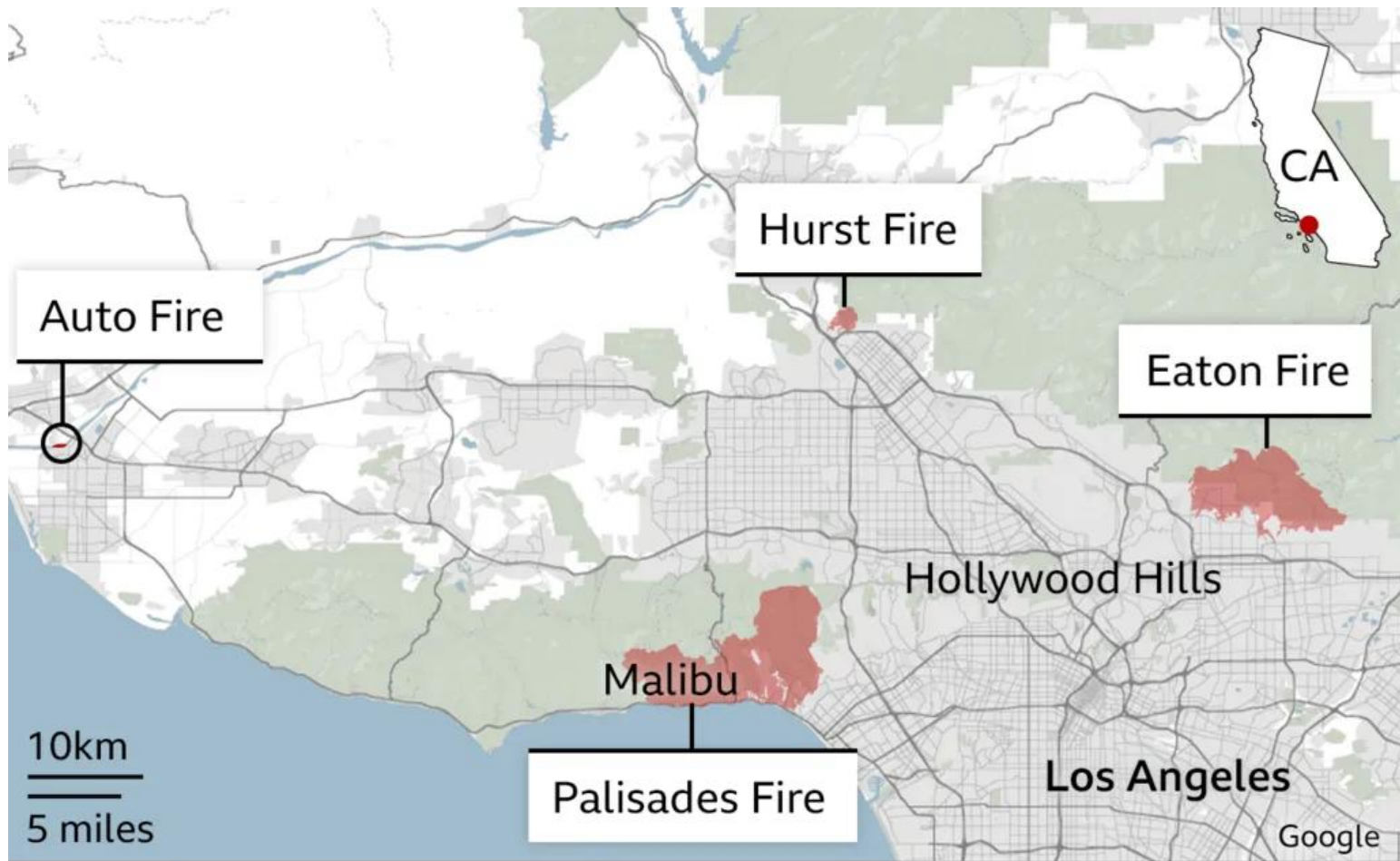
January 2025 LA County Wildfires

Palisades Fire. CAL FIRE assessed 12,066 structures.

- 55.8% single family homes and 94.5% mobile homes destroyed.
- 43.9% of commercial buildings destroyed.
- 51% of schools and 46.2% of churches lost or damaged.
- 62.4% of utilities infrastructure were destroyed.

Eaton Fire. 18, 421 structures assessed.

- 50.6% single family homes and 60% of mobile homes destroyed.
- 36.3% of commercial buildings destroyed.
- 42.9% of schools and 37.4% of churches lost or damaged.
- 55.1% of utilities infrastructure were destroyed.

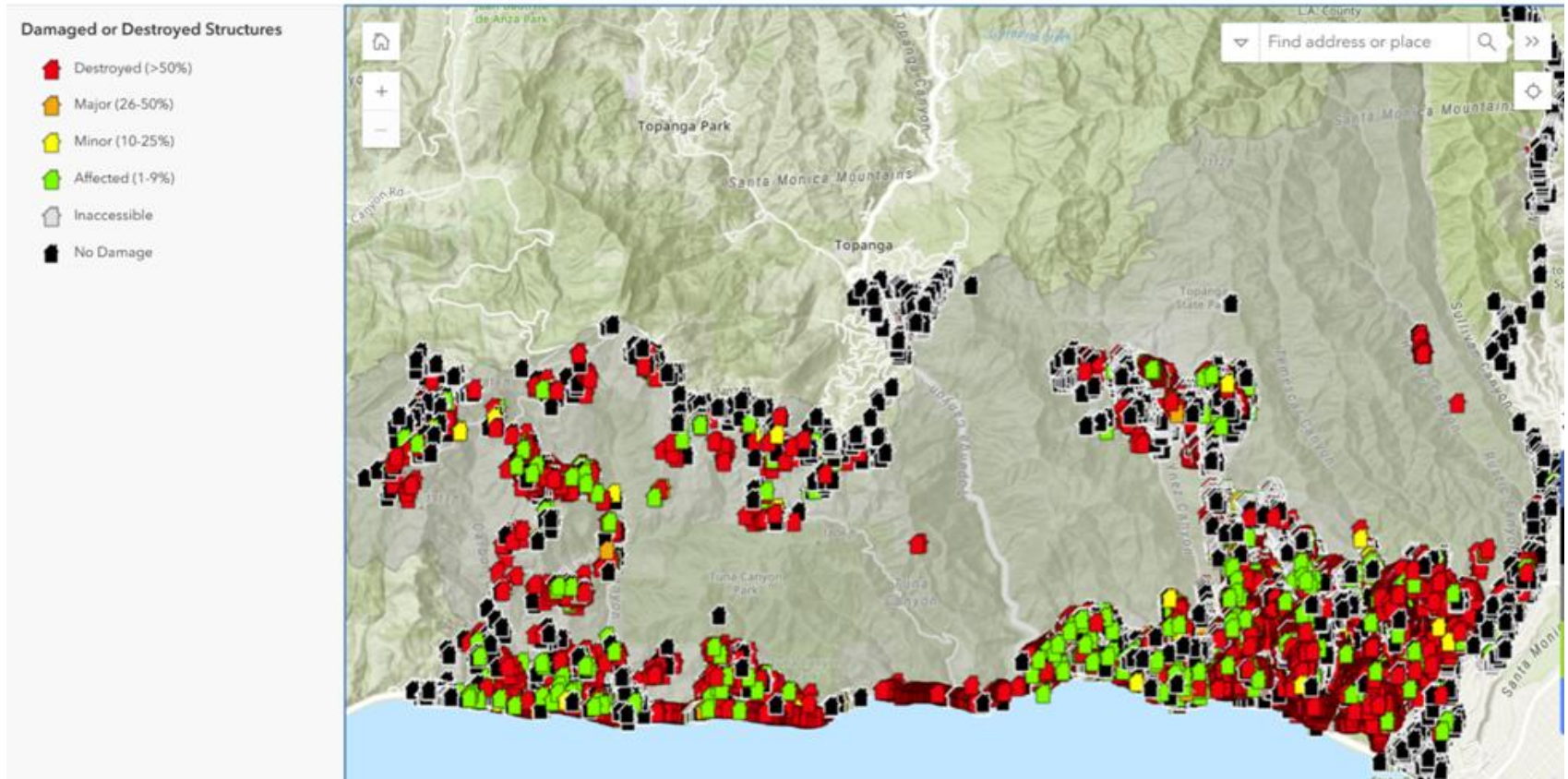


Source: Cal Fire (latest available data as of 14 Jan)

Palisades Fire – LA County Recovers

Lives Lost: 12

Structures Lost: 6,837



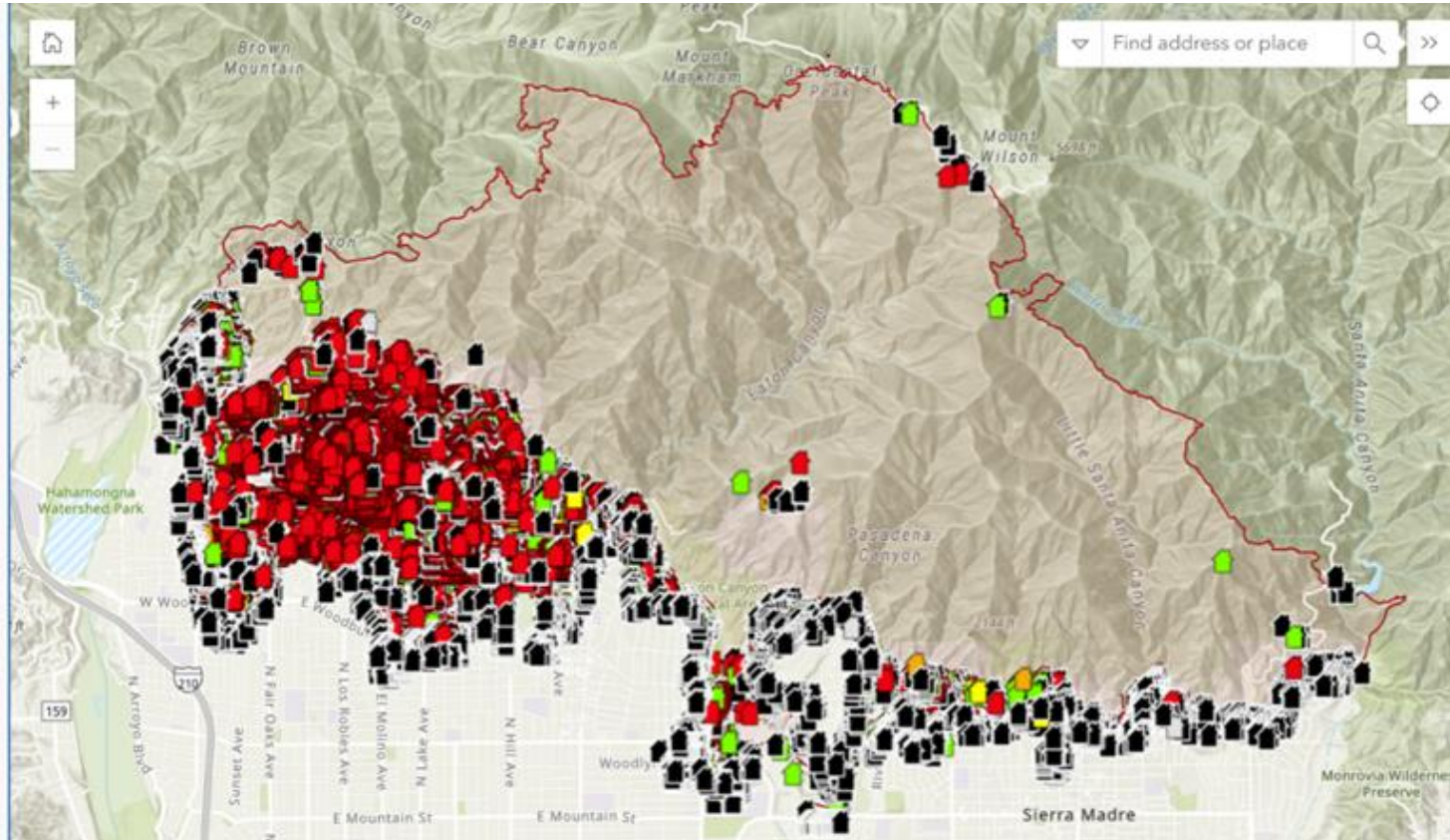
Eaton Fire – LA County Recovers

Lives Lost: 17

Structures Lost: 9,418

Damaged or Destroyed Structures

- Destroyed (>50%)
- Major (26-50%)
- Minor (10-25%)
- Affected (1-9%)
- Inaccessible
- No Damage





Maureen "Mo" Graber
Friends of Banner Mountain &
Banner Mountain Firewise Steering Committee

Meet Our Panelists:



Lisa Strange
Department of Insurance
Community Relations & Outreach

www.insurance.ca.gov

[Sustainable Insurance Strategy](#)



Phillip Irwin
FAIR Plan
Broker/Liaison

[FAIR Plan Basics Handout](#)

[FAIR Plan Discounts Handout](#)



Ryan Dunsdon
E Main Street Insurance
Broker & Commentator

530-477-5234

Ryan@EastMainIns.com



**Banner Mountain
Firewise Community**



Maureen "Mo" Graber
Friends of Banner Mountain &
Banner Mountain Firewise Steering Committee

Eye Opening Moments from the LA County Wildfires





Maureen "Mo" Graber
Friends of Banner Mountain &
Banner Mountain Firewise Steering Committee

Defensible Space and Home Hardening Limit Ember Ignition

- Proximity of Homes
- Lack of Home Hardening
- Lack of Defensible Space
- Flying Embers





Banner Mountain Firewise Community



FIREWISE USA™
Residents reducing wildfire risks

Jeff Peach
Banner Mountain Firewise Leader



Jeff Peach
Firewise Leader

Steve Baker

Evacuation Challenge Prize

You're Invited:

2025 Banner Terrace Fire Alert Street Meeting

Saturday, June 7th from 10am - 11am

Corner of Sesame Street/Wings of Morning Drive

[Neighborhood Go Plan.](#)

George Olive

Neighborhood Contact Challenge Prize

Connecting neighborhoods together to share information
ensures effective action and safe evacuation.

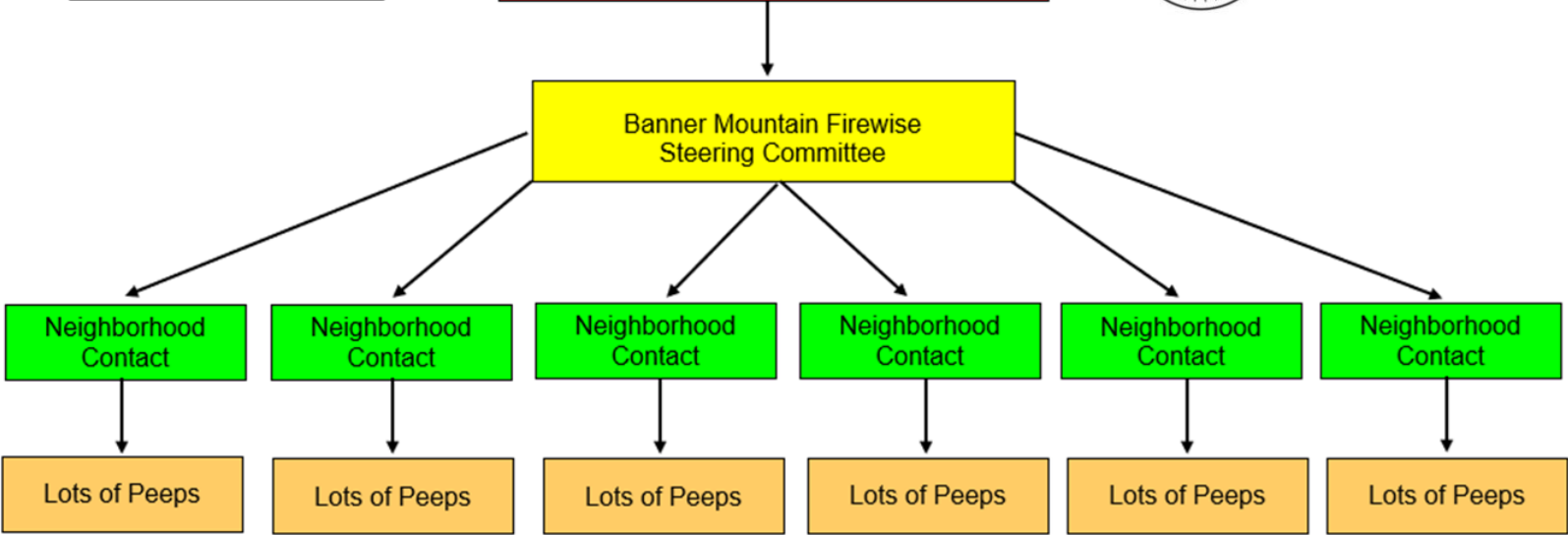
[Neighborhood Contacts Make it Work!](#)

Information Flow

Information from:
NFPA, CAL FIRE,
County OES,
Fire Safe Coalition & Council



Jeff Peach
Firewise Leader



Information from a trusted neighborhood source



Jeff Peach
Firewise Leader

What Does a Neighborhood Contact Do?

1. Identifies the neighborhood street name(s) and addresses he or she will represent.
2. Develops an easy way to communicate with the identified neighborhood group.
3. Attends BMFWC meetings or reviews the meeting minutes.
4. Shares provided information with their neighborhood group.
5. Encourages communication, cooperation, and self-reliance among the neighborhood group for emergency preparation.



**Banner Mountain
Firewise Community**



Jeff Peach
Firewise Leader

Together:

- ✓ We can make Banner Mountain more wildfire resistant.
- ✓ We can keep our families and neighbors safe.
- ✓ We can have a safe and early evacuation:
 - Read your "Ready, Set, Go!" handbook
 - Sign up for CodeRed
 - Know Your Zone
 - Know Your 5
 - Please work on your Defensible Space!



Banner Mountain Firewise Community



FIREWISE USA™
Residents reducing wildfire risks

Thank you
for joining us today



Banner Mountain Firewise Community



FIREWISE USA™
Residents reducing wildfire risks

THANK YOU FOR COMING!

Please Leave Your Question/Comment Card in the Basket

Please subscribe to the Friends of Banner Mountain email service

<https://www.bannermountain.org/>